

# Quick Guides to Vigor's New User-Friendly Software

The image shows a screenshot of the Vigor software interface with several callout boxes providing instructions for various features. The main interface is titled 'Main' and displays a 'Box Pressure' gauge, 'Oxygen' and 'Water' levels, and several control buttons: 'Settings', 'Alarms', 'Regen.', 'Circ.', 'Light', 'Auto-Evac.', and 'Vacuum Pump'. The top navigation bar includes 'System', 'Tasks', 'Parameter Settings', 'Software', 'Main Page', and 'Help'. Five inset windows show the contents of these menu items: 'System' (Language, User management, Exit system), 'Tasks' (Circulation, Regeneration, Purge, Leakage Test, Data Curve), 'Parameter Settings' (Box Pressure Limits, Alarm, Antechamber Auto Evac., Circulation, Factory Settings, Time Settings, Screen Saver Settings), 'Software' (Calculator, Reactant Requirements), and 'Help' (Contact Information, Operation Help, About).

**System Menu:**

- Language
- User management
- Exit system

**Tasks Menu:**

- Circulation
- Regeneration
- Purge
- Leakage Test
- Data Curve

**Parameter Settings Menu:**

- Box Pressure Limits
- Alarm
- Antechamber Auto Evac.
- Circulation
- Factory Settings
- Time Settings
- Screen Saver Settings

**Software Menu:**

- Calculator
- Reactant Requirements

**Help Menu:**

- Contact Information
- Operation Help
- About

**Main Interface Callouts:**

- Box Pressure:** Touch to Set Date/Time
- Box Data Display:** Touch to turn on/off box light
- Touch data display area to access historical data**
- Touch to switch the unit between PPM and dew point**
- Box pressure limits and alarm settings**
- Touch to perform regeneration**
- Touch for circulation settings and control**
- Flashing when alarm goes off. Touch to access details of alarms**
- Light:** Display auto-evacuation status
- No. of Evac.: 0 / 0**
- Auto-Evac.:** Antechamber auto-evacuation. Touch to operate
- Solenoid valve:** Touch to turn on/off valve
- Vacuum Pump:** Touch to turn on/off pump

System Settings [2011-06-08 17:07:16]

Box Pressure High: 0 mbar  
Low: 0 mbar **Default**

Alarm Settings O2 High: 0 ppm  
H2O Low: 0 ppm **Default**

Leakage rate 0.00000 %vol/h

**Main**

Historical Data [2011-06-08 17:06:36]

Content	Coordinate	Range	Value	Unit
Absolute clock	1 Hour		16:11	
Curve1		-18.8	18.0	
Curve2		-18.8	18.0	
Curve3		-18.8	18.0	

**Previous Main**

Large Antechamber Auto-Evacuation [2011-06-08 17:07:56]

**Start Default**

No. of Evac./Refill Cycles: 0  
Evacuation Time: 0 min  
Refill Pressure: 0 bar  
Pause Time: 0 min  
Last Evacuation Time: 0 min

**Main**

Main [2011-06-08 17:21:29]

Box Pressure: 0.00 mbar  
Oxygen: 0.00 ppm  
Water: 0.00 °C

**Settings Alarms**

Regen. Purifier Circ. Blower

Vacuum Pump

**Light**  
No. of Evac.: 0 / 0  
**Auto-Evac.**

Regeneration [2011-06-08 17:08:10]

**Start Adjusting Gas Flow Start Regeneration**

**Start Sol. Adsorber Regen Pause**

Regeneration Time Left: 0 min  
Running Time: 0 : 0 : 0

**Historical Data Main**

Purifier Circulation Settings [2011-06-08 16:59:32]

Circulation Mode: **On Demand**

On Demand Circulation Settings:  
O2 High: 0.0 ppm  
O2 Low: 0.0 ppm  
H2O High: 0.0 ppm  
H2O Low: 0.0 ppm **Default**

**Historical Data Main**

Alarms [2011-06-08 17:08:38]

Time	Object	Alarm Type	Alarm Event	Value	Limit	Description

**Next Main**

## **Touch screen panel is inactive before logging in!**

To use the touch screen, one must log into the system. There are three levels of users, namely Vigor, Owner, and User. Vigor can access to all features while the Owner have the same privileges as Vigor except the privileges to change the factory settings and manage the user accounts. The other users cannot perform the regeneration of purifier to avoid damage to the equipment.

As default, the Owner and User accounts have no password, which means that the accounts can be logged in without password (leaving the Password field blank). After log in, password can be changed. Vigor can manage the accounts, including creating new accounts and setting access limits and changing passwords for all accounts.

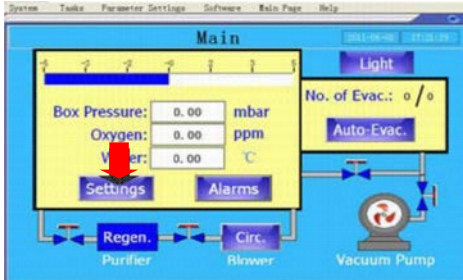
To Log in, please press “System”, “User Account”, “Log in” and then choose account name, enter password, and pressure “OK” to log in.

To avoid unauthorized use and damage of the equipment, please log out after you finish using the equipment.



## 1. Set Box Pressure Limits

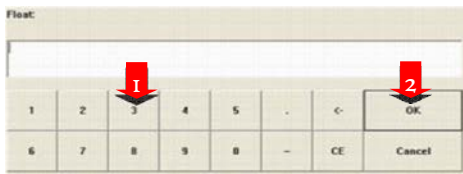
(1) Press Settings



(2) Enter field next to High and Low

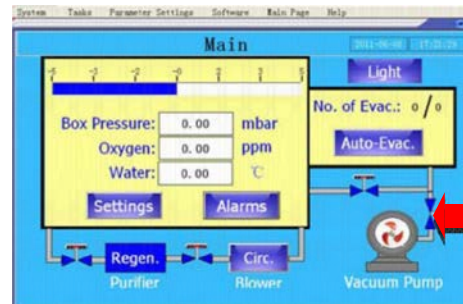


(3) Enter press limit

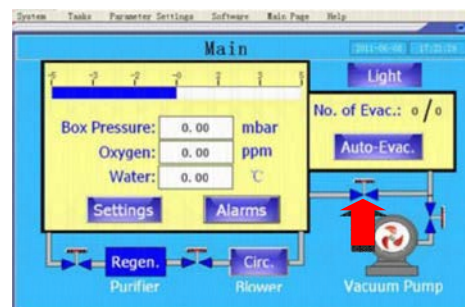


## 2. Manually Evacuate Antechamber

(1) Press evacuation valve to evacuate



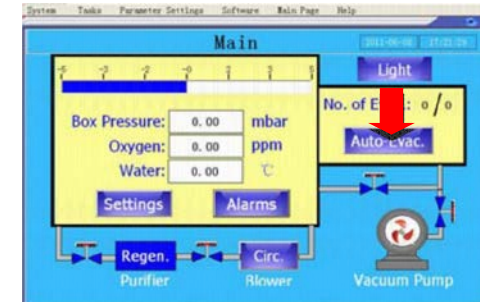
(2) Press refill valve to refill



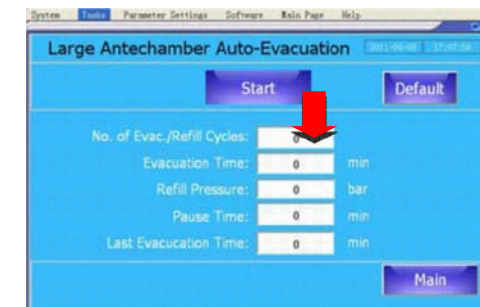
Two valves are interlocked. Turn on one valve will automatically turn of the other.

## 3. Automatically Evacuate Antechamber

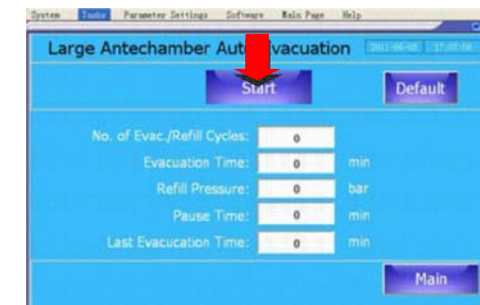
(1) Press Auto-Evac.



(2) Enter parameters

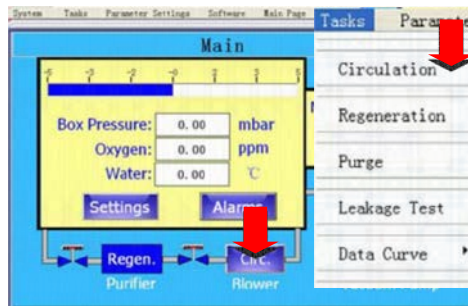


(3) Press Start to initiate program

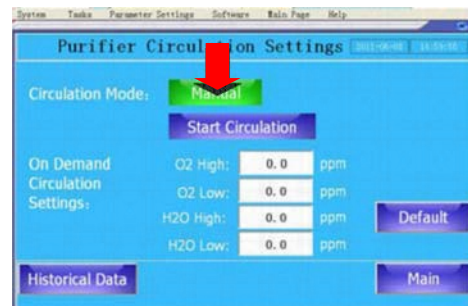


#### 4. Manual Circulation

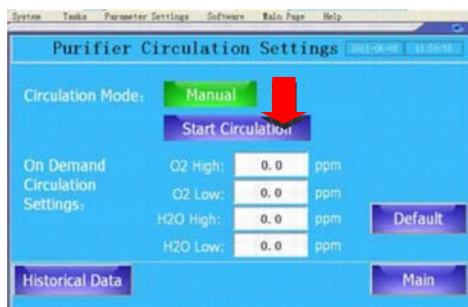
(1) Press Circ.



(2) Choose circulation mode as Manual

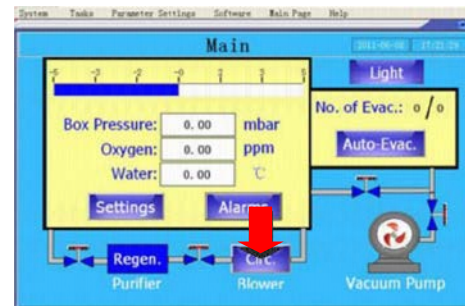


(3) Press **Start Circulation** to start circulation. Press **Stop Circulation** to stop the circulation

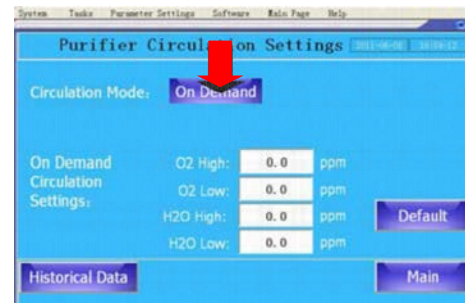


#### 5. Auto Circulation

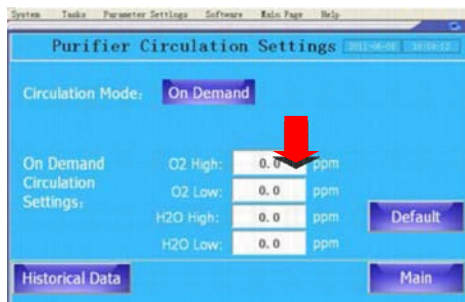
(1) Press Circ.



(2) Choose circulation mode as On Demand

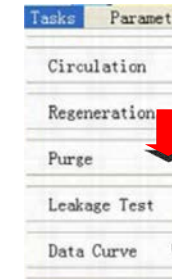


(3) Enter parameters and the purifier will work on demand to maintain the O<sub>2</sub> and H<sub>2</sub>O within the set range

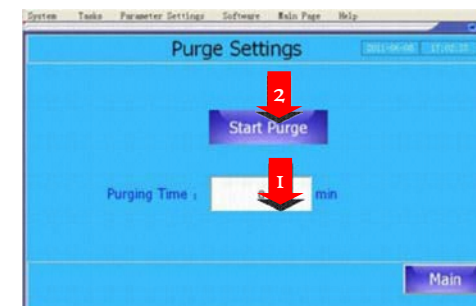


#### 6. Purge

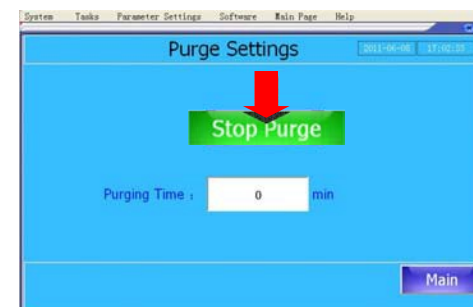
(1) Press Purge under Task



(2) Enter purging time and press **Start Purge**

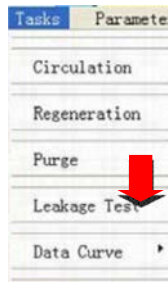


(3) Purging can be stopped at any time by pressing **Stop Purge**

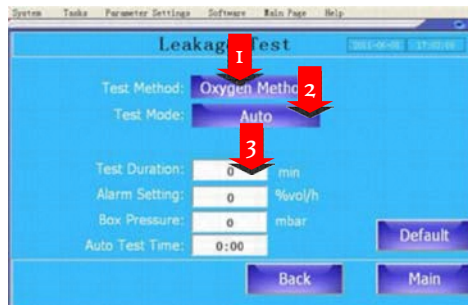


## 7. Auto Leak Rate Test

(1) Press Leak Test under Task



(2) Select Test Method, Test Mode, and enter parameters:

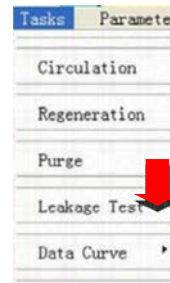


- Test Duration: 30 – 120 min
- Alarm Setting: Limit for alarm to go off, usually 0.05%vol/h
- Box Pressure: At the pressure the test to be performed, usually 3 mbar.
- Auto Test Time: Daily test time (in 24hr format).

(3) Daily leak test will automatically start at the set time

## 8. Manual Leak Rate Test

(1) Press Leak Test under Task



(2) Select Test Method, Test Mode, and enter parameters:

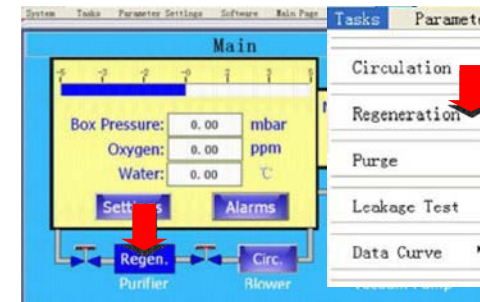


(3) Press **Start Manual Test**

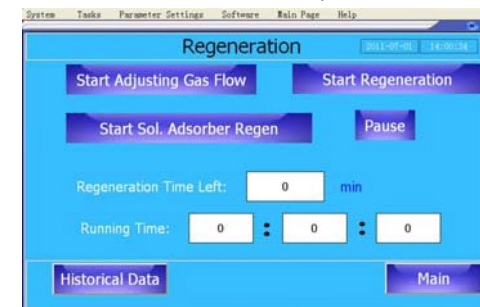


## 9. Regeneration

(1) Press Regeneration under Task



(2) Press **Start Adjusting Gas Flow** to adjust regeneration gas flow and press it again to finish the flow adjustment



(3) Press **Start Regeneration** to start regeneration, which will proceed automatically.

